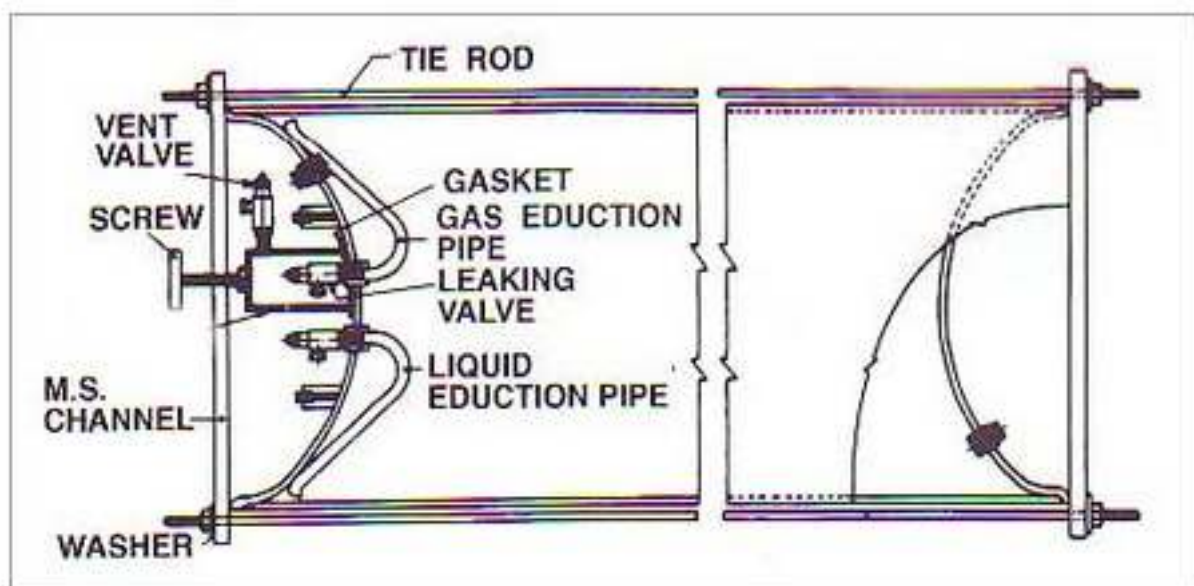


# Toner Repair Kit



## Part List of Chlorine Ton Container Rerair Kit (900 Kg )

1.	Tie road	2Nos
2.	½" Nut/Washers	8Nos.
3.	Front bar with sq. block	1No.
4.	Front Hood with gasket	1No.
5.	Hood pressure bolt	1No.
6.	Chlorine valve for hood	1No.
7.	Back bar with sq. block	1No.
8.	Plug hood with gasket	1No.
9.	Plug hood Pressure bolt	1No.
10.	Nylon tit ropes	2Nos.
11.	Dock plate S hooks	1No.
12.	Docking bolt	4Nos.
13.	Link chain	3mtrs.
14.	Pressure plate with gasket	1No.
15.	Pressure plate bolt	1No.
16.	Taper pin	1No.
17.	Yoke clamp	1No.
18.	Blind nipper	1No.
19.	Lead washers	5Nos.
20.	Yoke clamp spanner	1No.
21.	M.S. hose nipper	1No.
22.	Jubilee clip	2Nos.
23.	½" PVC tube	5mtrs.
24.	screw Driver	1No.
<b>Other necessities</b>		
25.	Gas Mask (Canister type)	1No.
26.	Ammonia solution (with torch)	450ml.
27.	Rubber frame goggle	1Nc.
28.	Hand gloves	2pairs.
29.	Hammer	1No.
30.	Chest Apron	2Nos.
31.	Key for valve spinde	1No.
32.	Fix spanners	3Nos.

**GROUP - A**

- Tie rods
- Relevant solution in a glass bottle
- Big hood with vent valve and valve cap on
- Angle irons
- Small hood
- Round yoke plate with cap screw
- Chains-96"long
- Base Plates
- Leak detection torch



**GROUP - B**

- Gas mask with corrugated hose
- filter canister
- Fibre glass hood respirator with PVC bolero
- PVC apron
- One Pair of PVC hand gloves
- Gas tight rubber goggles





**GROUP - C**

- Spanners-30mm x 32mm & 3/4" x 5/8"
- stud with welded handle
- Hammer
- Rubber gasket (OD 155mm-ID 90mm)
- Flexible copper tubing
- Yoke clamp
- Yoke with stud
- Opening/closing lever for vent valve
- Tie rod pipe pieces
- Cap nut
- Drift pins, in two sizes
- Rubber gasket
- Rubber gasket (OD 115mm-ID60mm)
- Tie rod washers
- Fibre gasket (1.25"OD-0.75"ID)
- Blind fibre gasket(1" Ø)
- Teflon tape
- steel patch plate

